

# NINA MAE FOWLER



Since her Rising Stars feature, Nina Mae Fowler has achieved wide acclaim: in 2015, a monograph of her work entitled *Nina Mae Fowler: Measuring Elvis* was published by Cob Gallery in London; in 2018, David Lynch's Silencio Club in Paris hosted a retrospective of her work; and in 2019, Nina won a major portrait commission for the National Portrait Gallery, which resulted in her series *Luminary Drawings*.

Fascinated by the Golden Age of Hollywood, Nina draws on the glamor and bacchanalia of the era to examine perennial themes of celebrity, sexuality, and power. Renowned for her meticulously detailed drawings, often of a large scale, Nina also works across sculpture and installation.

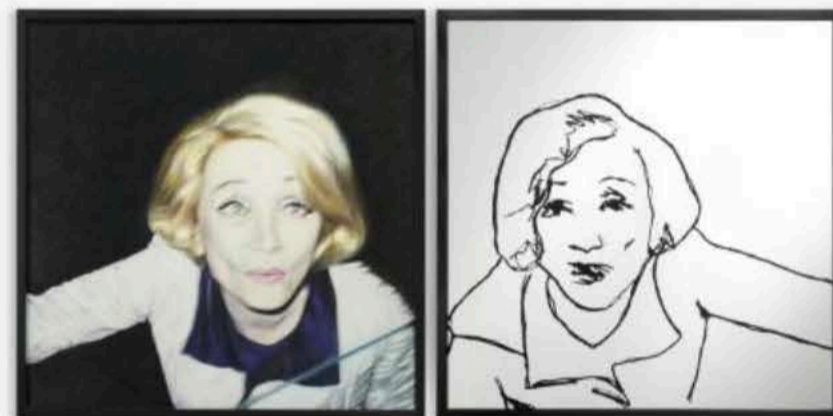
Nina holds a BFA in Sculpture from Brighton University in East Sussex, UK. She has exhibited widely across Europe, with shows in Berlin, Paris, and Leipzig.

- Nina's work is held in public collections around the world, such as the National Portrait Gallery in London; Colección Al Limite in Santiago, Chile.
- Private collectors of Nina's work include Jude Law, Sir Ridley Scott, and Luciano Benetton.

*Imitation (Part II)* Colored pencil on paper 6.7 x 9.4 in \$1,980



*A Fan of Her Own Performance*  
Pencil on paper and screen print on mirror 26 x 53 in \$7,100



*Total (Exquisite Accord)* Charcoal, EVA foam on paper 24 x 16.4 in \$3,560

